

**a perfect address  
for business  
success**



rajasthan's  
**largest**  
**lifestyle**  
**destination**





the new  
landmark  
of Jaipur



  
**PINKWALK**  
walk into grandeur





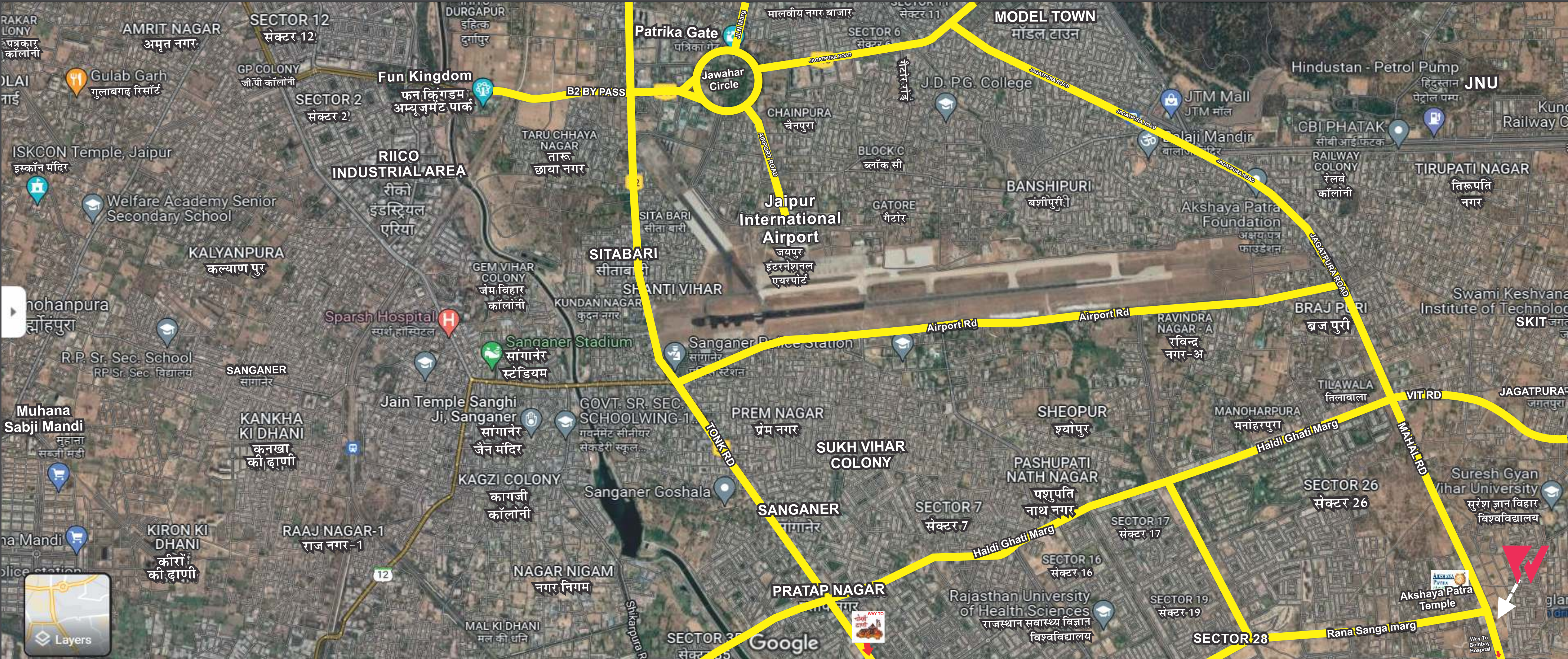
**It's not LARGE,  
It's the LARGEST!**

size, experience and benefits



PINKWALK is Rajasthan's largest shopping mall and lifestyle city centre. With a bold and innovative mix of retail, entertainment and leisure facilities, Pinkwalk is designed to redefine Jaipur's lifestyle shopping experience. PINKWALK is a business space with embedded grandeur at every level to attract shoppers with high household income.





**a location with  
gifted  
benefits.**

The neighbourhood around PINKWALK have the highest retail potential in Jaipur due to their consolidated residential structure and relatively high incomes per capita. A high-density residential neighbourhood, surrounding institutions and seamless connectivity from every corner of the city make Jagatpura the most preferred address for retail and lifestyle business.

## DISTANCE FROM PINKWALK

- |                   |         |                 |          |                |        |                          |          |
|-------------------|---------|-----------------|----------|----------------|--------|--------------------------|----------|
| ● Akshay Patra    | 200 mtr | ● Malviya Nagar | 6.9 KM   | ● NRI Colony   | 1.5 KM | ● Proposed Metro Station | 3.5 KM   |
| ● Bombay Hospital | 2.3 KM  | ● Airport       | 6 KM     | ● JNU          | 7.5 KM | ● Gyan Vihar Univesity   | 500 Mtr. |
| ● Tonk Road       | 3.5 KM  | ● Pratap Nagar  | 500 Mtr. | ● Chokhi Dhani | 5 KM   | ● World Trade Park       | 9 KM     |



demographics  
that mean  
business



Jagatpura, the south west corner of Jaipur with modern infrastructure in terms of planning, amenities and connectivity, housing, and aspiring population is the new throbbing hub of commercial and residential developments. Jagatpura is an address with an customer base seeking leisure, shopping, high end office spaces and entertainment. Manglam has conceptualized an iconic development in Jagatpura which is destined to change the shopping landscape in Jaipur. There was an aching need of a world-class shopping, entertainment and business center in Jaipur, which will be met by PINKWALK.

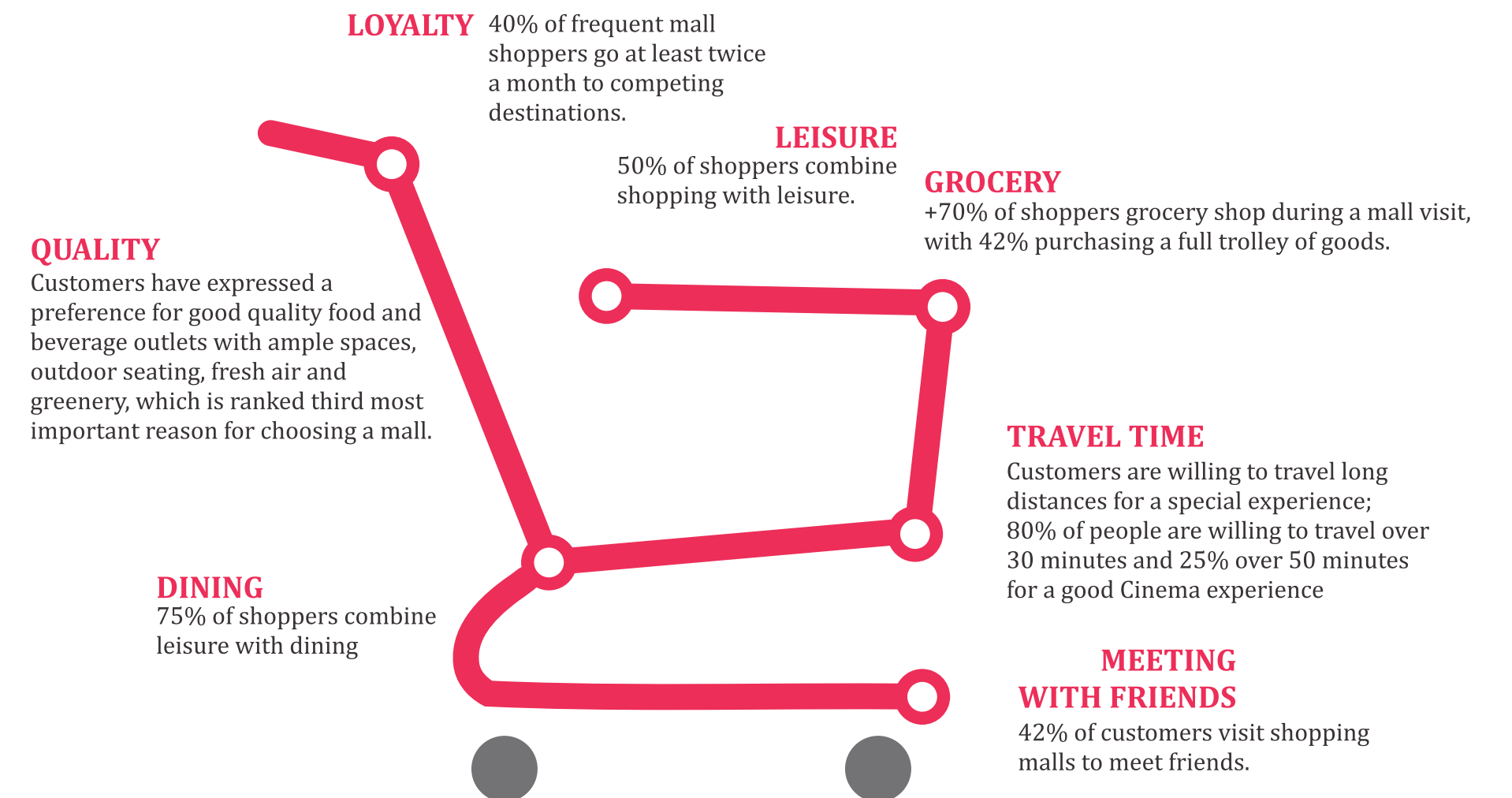


## a perfect retail mix

A well thought out and planned retail mix at PINKWALK shall provide retailers with a focussed position and helps differentiate them from the competition. The design of the property and it's retail mix have been thoughtfully planned after an in-depth study of consumer behaviour in the vicinity.



## CUSTOMER INSIGHTS



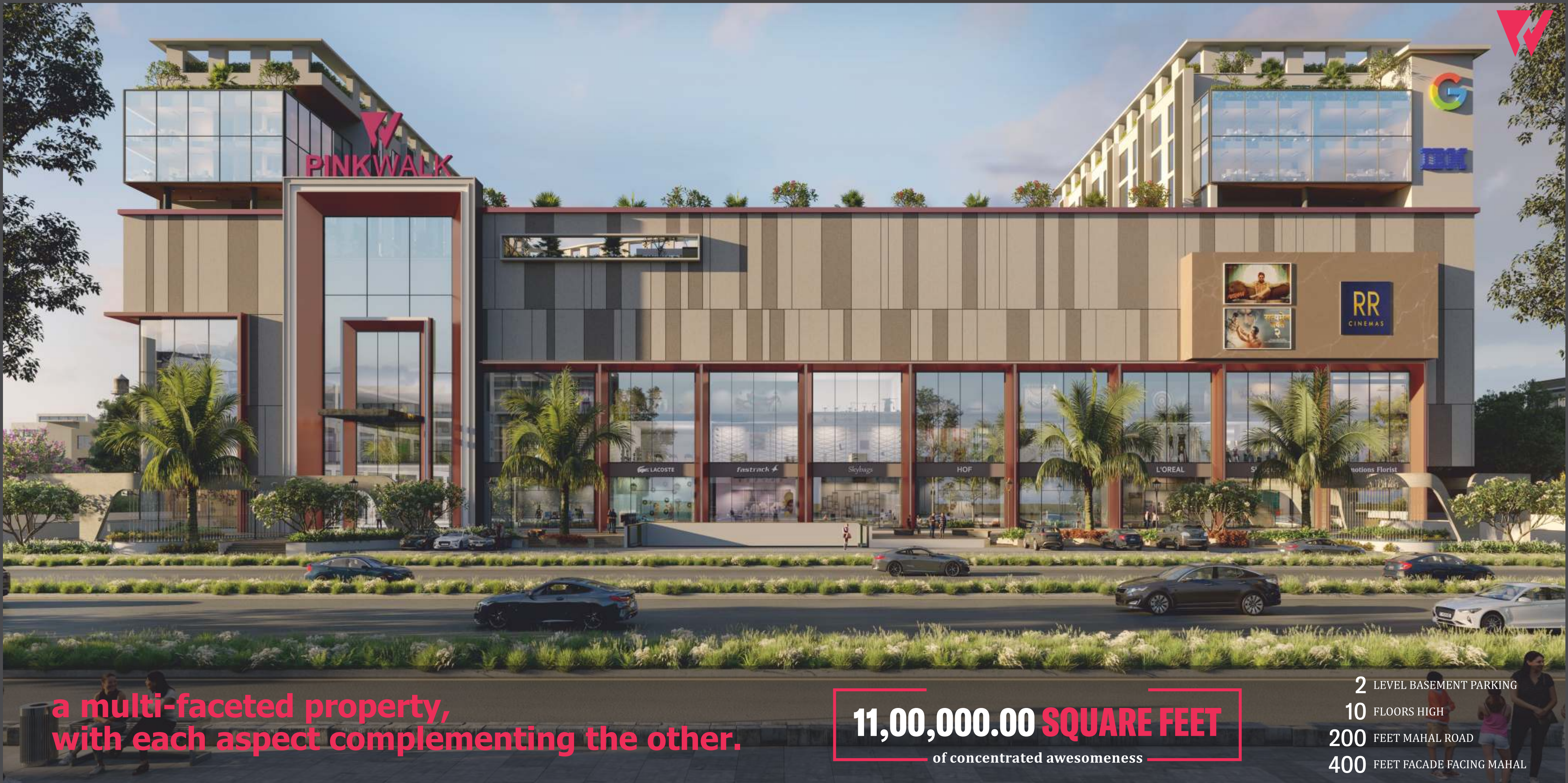


## a setting where brands thrive

Designed to cater both local and global brands, we offer a complete solution for your business. Whether you are looking to open your first store or expand your existing portfolio, PINKWALK provides tailor-made solutions for businesses of all sizes. PINKWALK is the mall where brands are meant to thrive. Discover, get discovered, invest, and participate in the new generation of retail at PINKWALK.





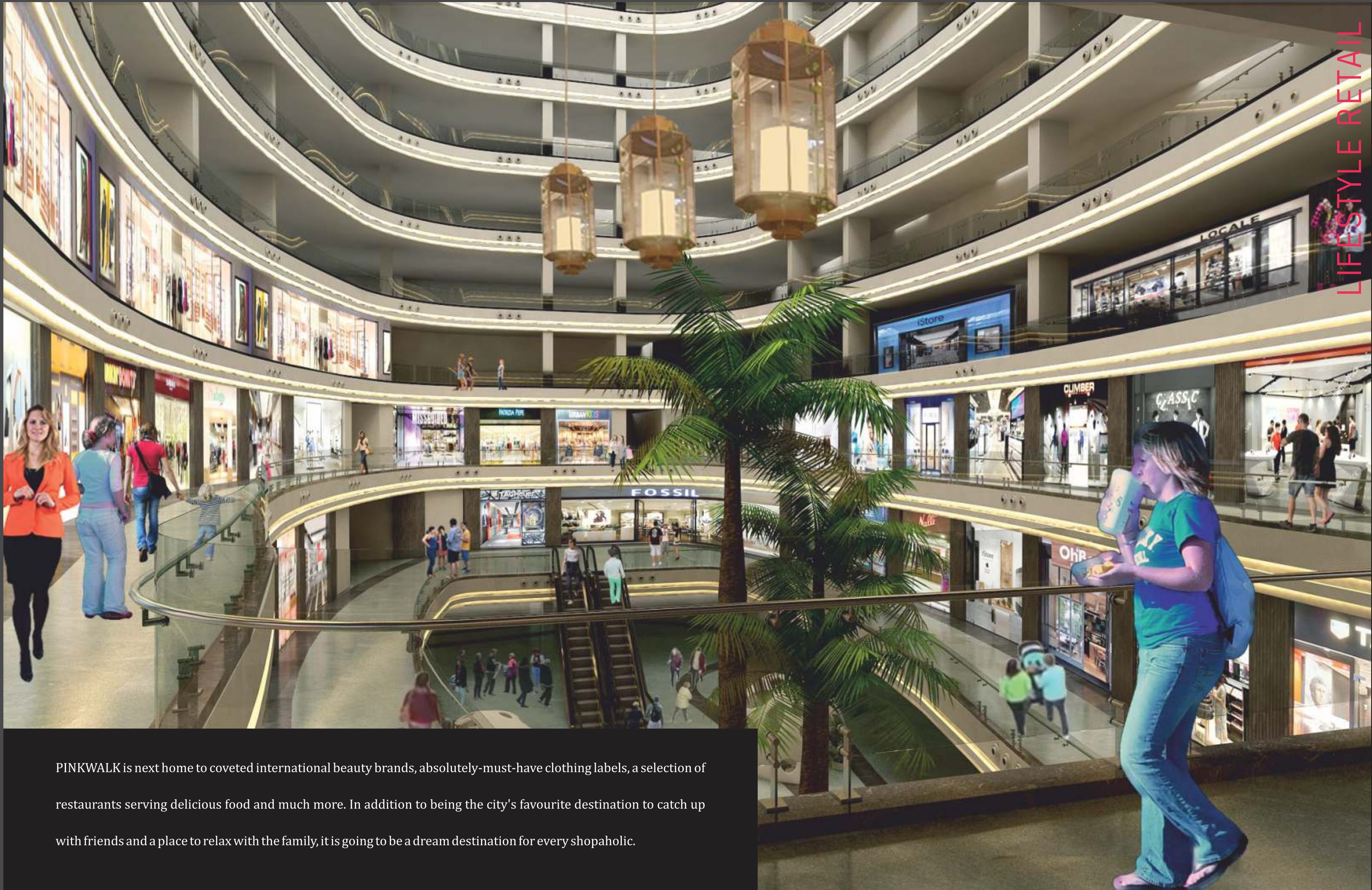


a multi-faceted property,  
with each aspect complementing the other.

**11,00,000.00 SQUARE FEET**  
of concentrated awesomeness

- 2 LEVEL BASEMENT PARKING
- 10 FLOORS HIGH
- 200 FEET MAHAL ROAD
- 400 FEET FACADE FACING MAHAL





LG, G, 1<sup>st</sup>, 2<sup>nd</sup> FLOORS



PINKWALK is next home to coveted international beauty brands, absolutely-must-have clothing labels, a selection of restaurants serving delicious food and much more. In addition to being the city's favourite destination to catch up with friends and a place to relax with the family, it is going to be a dream destination for every shopaholic.

**5,50,000+**

SQ.FT. OF RETAIL SPACES

**20,000+**

SQ.FT. OF AREA EACH FOR  
TWO DEPARTMENTAL STORES

**40+**

VANILLA STORES

**25,000+**

SQ.FT. OF AREA FOR  
HYPER MARKET

**10,000+**

SQ.FT. OF AREA FOR  
ELECTRONIC SUPERSTORE

**20,000+**

SQ.FT. OF AREA FOR  
FURNITURE SUPERSTORE





## PINKBAZAAR

**75**  
SHOWROOMS

**86**  
SHOPS

**237**  
MINI SHOPS

The PINKBAZAAR at PINKWALK is a Chaupar styled traditionally themed market space designed to bring alive traditional shopping experience in its most efficient way. A curated blend of traditional and modern lifestyle will make it a new go-to-place for shoppers who prefer traditional ways and value shopping.

### LARGEST FLEA MARKET

- MEN'S WEAR
- WOMEN'S WEAR
- KIDS WEAR
- FASHION ACCESSORIES
- FOOTWEAR
- COSMETICS
- SILVER JEWELLERY
- HANDICRAFTS
- HOME-DECOR
- MOBILE ACCESSORIES
- SALONS

### SALIENT FEATURES

- 4 DIRECT ACCESS FROM MAIN ROAD
- 10 FEET WIDE CORRIDOR (APPROX.)
- HYPER MARKET ON SAME FLOOR
- CENTRALLY AIR-CONDITIONED
- 100% POWER BACKUP
- MAIN ATRIUM VISIBILITY AND ACCESS
- ORGANIZED SHOP ZONING TO EASE CUSTOMER NAVIGATION
- MULTIPLE SHOP/KIOSKS SIZES





A WORLD OF CUISINES

FOOD COURT/RESTAURANT/COFFEE LOUNGE/QSR  
3<sup>rd</sup> FLOOR



MORE THAN  
**20,000**

SQ.FT. AREA OF EATERIES

**A MULTI-BRAND FOOD-COURT WITH DEDICATED  
SEATING AND SERVICE AREA.  
CENTRALLY AIR CONDITIONED**

Dining is at the heart of an integrated shopping experience that fosters lasting memories. The food court is designed to offer precinct, comprising semi-formal and formal dining in a backdrop of lavish interiors and architecture.

The floor shall offer facilities such as separate preparation area, dishwash facility, hi-tech fire fighting, security and hygiene management systems .





MOVIE MAGIC

3<sup>rd</sup> FLOOR



**6 SCREENS**  
MULTIPLEX

**1,000+ SEATS**

**50,000+**  
OF SILVER SCREEN

PINKWALK is poised to be the next hub for cinemagoers in Jaipur. With 6 giant screens, on 3rd floor of the property it will offer an unmatched movie experience to every movie buff.





## GAMING AND CELEBRATION ZONE

3<sup>rd</sup> FLOOR

**28,000**

SQ.FT. GAMING AND ENTERTAINMENT  
FOR ALL AGES.

PINKWALK will house a gaming and entertainment zone where you will rediscover a brand, new way to be entertained. From premium games and 3D simulators, to bowling lanes and a bar, PINKWALK is the place to be in Jaipur. From school visits to birthday parties and corporate events, PINKWALK caters to both, the young and old.

### GAMING & CELEBRATION ZONE

- SNOW WORLD
- ICE RINK
- TRAMPOLINE PARK
- BOWLING ALLEY
- VIRTUAL GAMES
- ARCADE GAMES
- MANY MORE GAMES







FROM 5<sup>th</sup> FLOOR ONWARDS



# PINKSIGNATURE

BOUTIQUE OFFICES

SIGNATURE OFFICES WITH EXCLUSIVE  
GRAND ENTRY





SIGNATURE OFFICES



1,85,000

SQ.FT. OFFICE SPACE WITH DEDICATED LOBBY  
& 100% POWER BACKUP

After the huge success of Signature tower, Pinkwalk offices are designed keeping in mind corporate office culture and needs. Grand exclusive entry, dedicated reception lobby and wide corridors make the offices desirable work spaces. Right from its emerging location, its thoughtful master planning, graceful landscaping to the well designed distinct floors for offices, you will find pinkwalk offices perfect choice for investment to generate wonderful returns.



4<sup>th</sup> FLOOR ONWARDS

**PINKSUITES**  
SMART ACCOMMODATIONS



**178-KEY**  
SERVICED SUITE  
FLOORS





a haven for  
**travelers and**  
**trendy urbanites**

Studio Suites at PINKWALK are envisioned to give a homely experience to discerning travelers and other trendy urbanites, looking for smart accommodations. PINK SUITES shall have everything, from the privacy of an individual studio with all modern amenities to the newest one-bedroom apartment that's never been lived in before.





## the PINKCLUB

THE PINK CLUB- our clubhouse at PINKWALK is designed to provide a fun and secure recreational environment for STUDIO RESIDENTS AND CORPORATE ZONE OCCUPANTS.

Features like a grand swimming pool, fully loaded gym, extensive library, TT Table & pool table help you relax and stay productive and fresh all day.

5<sup>th</sup> FLOOR





## a glance at features

### MALL EXTERIOR

- Imposing entrance • Magnificent facade with contemporary design

### VERTICAL CIRCULATION

- 16 Nos. lifts inclusive of 8 service lifts connecting all floors • 10 Nos. escalators connecting lower ground to third floor

### MALL INTERIORS

- Vitrified tiles / granite flooring • Glass railing with stainless steel hand rail • Shops planned around capacious atrium • Designer false ceiling in lobby areas • Glass front for each shop • Large atrium with well design ceiling and lighting

### MALL PARKING

- Two levels of basement dedicated for parking • Open car parking on ground floor

### POWER BACKUP

- 100% power backup for entire mall

### COMMON FACILITIES

- Public address system with speakers across the entire building • Channel music • Well—appointed public toilets • Dedicated building management system for entire mall

### MALL LIGHTING

- Facade lighting • Site lighting and well designed internal lighting • Lighting fixtures include 24 hrs compact fluorescent Burners • Energy efficient lamps • Effect lighting in atrium

### MALL SECURITY

- 24 hours security with latest security system & devices

### ELECTRICAL & PLUMBING

- Concealed water saving flush valves • Infrared automated basin taps • Rain water harvesting system • Broad band internet provision • Wi-Fi

### HVAC SYSTEM

- Air conditioning in the mall (shopping area only)

### FIRE FIGHTING SYSTEM

- All areas fully equipped with latest fire fighting systems • Fire fighting static water tanks with pumps • Fire hydrants in external areas • Fire escape staircases

### PINK BAZAAR FEATURES

- Designer mini shops & shops on lower ground floor • Designer ceiling • Large size corridors • Connected with escalators through atrium • ATM facilities • Air conditioned bazaar • Floor to floor 14' ht. for more space in shops & mini shops • Vitrified tile flooring

### OFFICE FEATURES

- Dedicated lobby on office floors with reception & waiting area • 5 lifts for office floors • Designer ceiling in lobby area • Ample size corridors • Vitrified tiles flooring • Common washroom facilities on each office floors • Ventilation and services • Wi-Fi enabled







## PROJECT CONSULTANTS

### ARCHITECTS

**IDEAS** ARCHITECTS

IDEAS is one of the leading design firms specializing in Architecture, Urban Planning. Over the past 25 years the firm has established itself as a premier design brand. The approach to design is rooted in the belief that states, successful living spaces start with a philosophy for the community and a deep understanding of the environment and cultural needs.

### INTERIOR CONSULTANT

**DESIGN ACCORD** DESIGN FIRM - NEW DELHI

DESIGN ACCORD is a Boutique Design Firm based out of New Delhi, India, offering specialized design services in Interior Design. With an energetic team of young Architects DESIGN ACCORD has diverse exposure at handling vast spectrum of projects across the country and abroad including hospitality, mixed use, commercial, residential, landscape, master planning and public realm projects.

### LANDSCAPE CONSULTANT

**SATATV** DESIGN CONSULTANTS

SATATV design consultants constitutes professionals associated with the field of landscape architecture, geared up towards providing site planning and landscape design services. Our landscapes are firmly rooted in a comprehensive understanding of site and context, which are developed in conjunction with the client to create spaces that have positive impact. Our strongest concern lies in evolving a unique design vocabulary that is highly responsive to the context.



the **TRUST** factor

MR. N.K. GUPTA  
CHAIRMAN  
MANGLAM GROUP



In a collective endeavour to bring the best of shopping and lifestyle experience, keeping in view preferences and characteristic features of people of Jaipur, two of the most reputed and trusted brands in the industry have synergised to ensure that excellence is delivered at every level and in every detail.

We invite you to explore PINKWALK and become a part of this landmark in making. We will ensure that PINKWALK turns out to be the best business address for your business success.

WALK INTO GRANDEUR

Cheers!

MR. HARISH JAGTANI  
PRESIDENT  
HJ GROUP OF COMPANIES



## PROMOTERS:

With over 25 years of excellence driven track record in real estate and construction, MANGLAM GROUP is a name which now stands as a synonym for trust and reliance. Having successfully delivered over 100 projects across the country, Manglam is the most awarded and trusted brand in Rajasthan.

PINKWALK is partnered by SSB GROUP which has been known for creating innovative spaces and deep rooted professionalism. A brand build over years of constant innovation, honesty and ethos, SSB is dedicated to upholding the principles of ethics and integrity.

A synergy of two powerful brands of the industry is all set to transform a land into a landmark, that'll be admired across the country.







## the bottom-line

Given its set of characteristics, PINKWALK is the perfect recipe for success.  
It fits best in all parameters that are critical when planning a investment.

With brand tie-ups and commercial tie-ups, PINKWALK will be home to the most successful retail outfits in India.  
To be promoted, run and managed by the developer, the brand owners can expect huge footfall and a well-maintained property.





OPP. AKSHYA PATRA TEMPLE, MAHAL ROAD, JAGATPURA, JAIPUR

MANGLAM BUILD DEVELOPERS LTD.

6th Floor, Apex Mall, Lal Kothi, Tonk Road, Jaipur (Raj.) 302015

---

[info@manglamgroup.com](mailto:info@manglamgroup.com) | [www.manglamgroup.com](http://www.manglamgroup.com) | Call for more info : 0141-4311193, Finance Available From All Leading Banks

---

Disclaimer: The amenities, specifications, facilities, surrounding infrastructure, stock images and features shown and/or mentioned and the image renders used herein are purely indicative and promotional and may differ from the actual.  
Any prospective sale shall strictly be governed by the terms and conditions of the agreement for sale to be entered into between the parties.

Rera No.: RAJ/P/2022/1899. [www.rera.rajasthan.gov.in](http://www.rera.rajasthan.gov.in)