



*Life Just got better  
with luxury living*

 **Manglam's**  
**AANANDA**  
The Complete City

**Phase -II**



*A life is a treat and we serve it well*

We believe in having good times, magical laughter and creating memories. We at Aananda aims to serve all with magnificent lifestyle within a complex. Meticulously & Innovatively crafted 2,3 & 4 BHK Premium Residential Apartments in Jaipur city, for excitement in life with a cluster of incomparable amenities along with its world-class quality & flawless design.





*Embellish life that takes  
you on a soothing route*

Manglam's  
**AANANDA**  
The Complete City

## *Creating moments to cherish lifetime*

Take a relaxing dip to make you refresh in seamlessly designed swimming pools along with kids garden area for fun activities for children. While you enjoy the other indoor and outdoor recreational activities within the club we serve your kids and parents with pleasure.

### *Life for* **KIDS**

## *A perfect place for leisure times*

Understanding the emotion of togetherness and valuing it to the core while giving a meaning to a home. Magnificent lifestyle within the complex with all the ravishing luxuries and facilities at your doorsteps leaving you to spend quality time with your near and dear ones. Stay young and be fit, enjoy life to fullest while valuing the togetherness.

### *Life for* **YOUTH**

## *Give your parents a reason to smile*

As long as you live, live all the days of your life and rejoice beautiful memories while creating new ones. Experience tranquility with the fascinating atmosphere amidst sunbathed beautiful flora for long walks.

### *Life for* **SENIOR CITIZEN**

## *World Class Amenities*

- |  |  |  |   |
|--|--|--|---|
|  Library                  |  Large Size Swimming Pool |  Multipurpose Hall          |  Cafeteria         |
|  Spa & Saloon             |  Creche                   |  Indoor Games               |  Gymnasium         |
|  Yoga and Meditation Hall |  Miniplex                 |  Guest Rooms                |  Squash Court      |
|  Cricket Pitch            |  Badminton Court          |  Shops                      |  Landscape Gardens |
|  Open Amphitheater        |  Gazebo                   |  Flower Bed with Sculptures |  Lawn Tennis Court |
|  Kids Play Area           |  Skating Rink             |  Sport Area                 |  Jogging Track     |
|  Family Zone              |  Half Basket Ball Court   |  |   |

## *Making everyone rejoice*



*A place to bliss your happiness & rejuvenate life*



A perfect location to triumph and relish moments. Swimming pool creating refreshing ripples giving life a pump & make it exciting, complemented with a mesmerizing ambiance. While the recreational club is constructed keeping in view all modern, luxury and comfort needs. It provides a variety of recreational facilities starting from Billiards, Table Tennis and so on to play in leisure times.

The gym offers latest range of fitness equipments for fitness freak enthusiastic individuals to tone their muscles and to remain fit and charming. There is something interesting for everyone in the family. Play with water blues and enjoy mesmerizing moments at Aananda.



Billiard Table  
Relax and play



Modern Gym  
stay healthy and wealthy



Café Area  
connect to dear ones



*Get indulged in the refreshing epitome*



Brimming with a positive aura, intensive landscape adds charm to the area of socializing and rejuvenating life with friends of your age group and celebrate life as a victory while the temple is rendered within the township for spiritual adorers for a complete holistic experience.



Temple  
a holistic divinity



Senior Citizen  
Sitting Area  
Enjoy life while  
Creating Memories



Jogging Area  
stay healthy to be wealthy



# Life at Ananda



Entrance  
for a superb life !



Amazing Landscaping a bliss of nature



Kids Pool  
fun at its best !



Children's play area fun at its best !



## PHASE-II

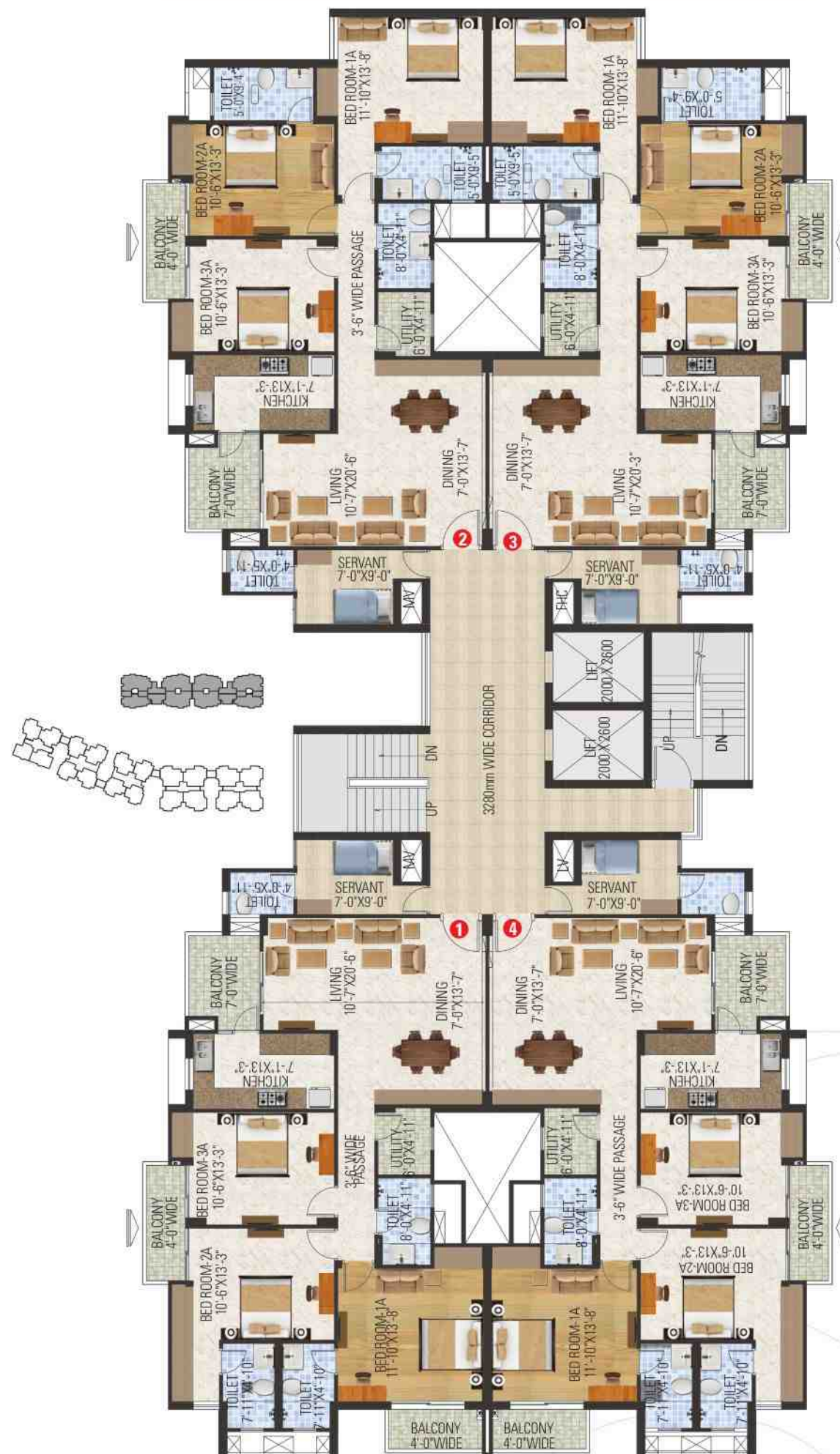
- |   |   |
|---|---|
|  Tower - 12   1100 Sq.Ft.   2 BHK                  |  Tower - 8 & 9   1770 Sq.Ft.   3 BHK         |
|  Tower - 12   1210 Sq.Ft.   2 BHK + Study          |  Tower - 6 & 7   1830 Sq.Ft.   3 BHK + Staff |
|  Tower - 10, 11 & 12   1325 Sq.Ft.   2 BHK         |  Tower - 6 & 7   1870 Sq.Ft.   3 BHK + Staff |
|  Tower - 10, 11 & 12   1490 Sq.Ft.   2 BHK + Study |   |

## LEGENDS

- |                         |                       |                      |                   |
|-------------------------|-----------------------|----------------------|-------------------|
| 01) ENTRANCE GATE       | 08) YOGA DECK         | 14) CLUB HOUSE       | 21) FLOWER GARDEN |
| 02) SECURITY CABIN      | 09) KIDS ZONE         | 15) SPLASH POOL      | 22) PARKING AREA  |
| 03) WATER BODY          | 10) FLOWER BED WITH   | 16) PARTY LAWNS      | 23) PARGOLA       |
| 04) GARDEN              | SCULPTURES            | 17) WOODEN DECK      | 24) PLAZA         |
| 05) SENIOR CITIZEN AREA | 11) FAMILY ZONE       | 18) TENNIS COURT     |                   |
| 06) JOGGING TRACK       | 12) OPEN AMPHITHEATER | 19) BASKETBALL COURT |                   |
| 07) GAZEBO              | 13) SPORTS AREA       | 20) BADMINTON COURT  |                   |



## TYPICAL FLOOR PLAN | Tower 6 & 7



Unit Type : **A** | **3 BHK + Staff** | Tower 6 & 7  
CARPET AREA - **1248** Sq. Ft. | BALCONY AREA - **104** SFT. | SBUA - **1830** Sq. Ft.

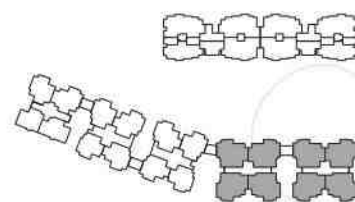


Unit Type : **B** | **3 BHK + Staff** | Tower 6 & 7  
CARPET AREA - **1251** Sq. Ft. | BALCONY AREA - **143** SFT. | SBUA - **1870** Sq. Ft.

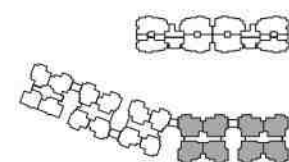
Accessories shown in the layout plans such as furniture, electrical appliances, cabinets etc. are indicative and not a part of sale offering.

Accessories shown in the layout plans such as furniture, electrical appliances, cabinets etc. are indicative and not a part of sale offering.

## TYPICAL FLOOR PLAN | Tower 8 & 9



Accessories shown in the layout plans such as furniture, electrical appliances, cabinets etc. are indicative and not a part of sale offering.



Unit Type : **A** | **3 BHK** | Tower **8 & 9**  
 CARPET AREA - **1150** Sq. Ft. | BALCONY AREA - **161** SFT. | SBUA - **1770** Sq. Ft.

Accessories shown in the layout plans such as furniture, electrical appliances, cabinets etc. are indicative and not a part of sale offering.

## TYPICAL FLOOR PLAN | Tower 10 & 11



Unit Type : **A** | **2 BHK** | Tower 10 & 11  
 CARPET AREA - **800** Sq. Ft. | BALCONY AREA - **161** SFT. | SBUA - **1325** Sq. Ft.



Unit Type : **B** | **2 BHK + Study** | Tower 10 & 11  
 CARPET AREA - **919** Sq. Ft. | BALCONY AREA - **161** SFT. | SBUA - **1490** Sq. Ft.

Accessories shown in the layout plans such as furniture, electrical appliances, cabinets etc. are indicative and not a part of sale offering.

Accessories shown in the layout plans such as furniture, electrical appliances, cabinets etc. are indicative and not a part of sale offering.

## TYPICAL FLOOR PLAN | Tower 12

CARPET AREA - 800 Sq. Ft.  
BALCONY AREA - 161 Sq. Ft.  
SBUA - 1329 Sq. Ft.



CARPET AREA - 919 Sq. Ft.  
BALCONY AREA - 161 Sq. Ft.  
SBUA - 1490 Sq. Ft.



Unit Type : **C** | 2 BHK + Study | Tower 12  
CARPET AREA - 787 Sq. Ft. | BALCONY AREA - 78 SFT. | SBUA - 1210 Sq. Ft.



Unit Type : **D** | 2 BHK | Tower 12  
CARPET AREA - 712 Sq. Ft. | BALCONY AREA - 78 SFT. | SBUA - 1100 Sq. Ft.

Accessories shown in the layout plans such as furniture, electrical appliances, cabinets etc. are indicative and not a part of sale offering.

Accessories shown in the layout plans such as furniture, electrical appliances, cabinets etc. are indicative and not a part of sale offering.

*The Profession Team of Harmony Facility Management Pvt. Ltd. Makes our life secure.*



**DEDICATED  
TO SERVICE**

A secure & comfortable living & healthy environment is the basic purpose of owning a home. As to choosing a right home is a life time opportunities where you can stay with full of satisfaction so everybody is suppose to be conscious while choosing a home.

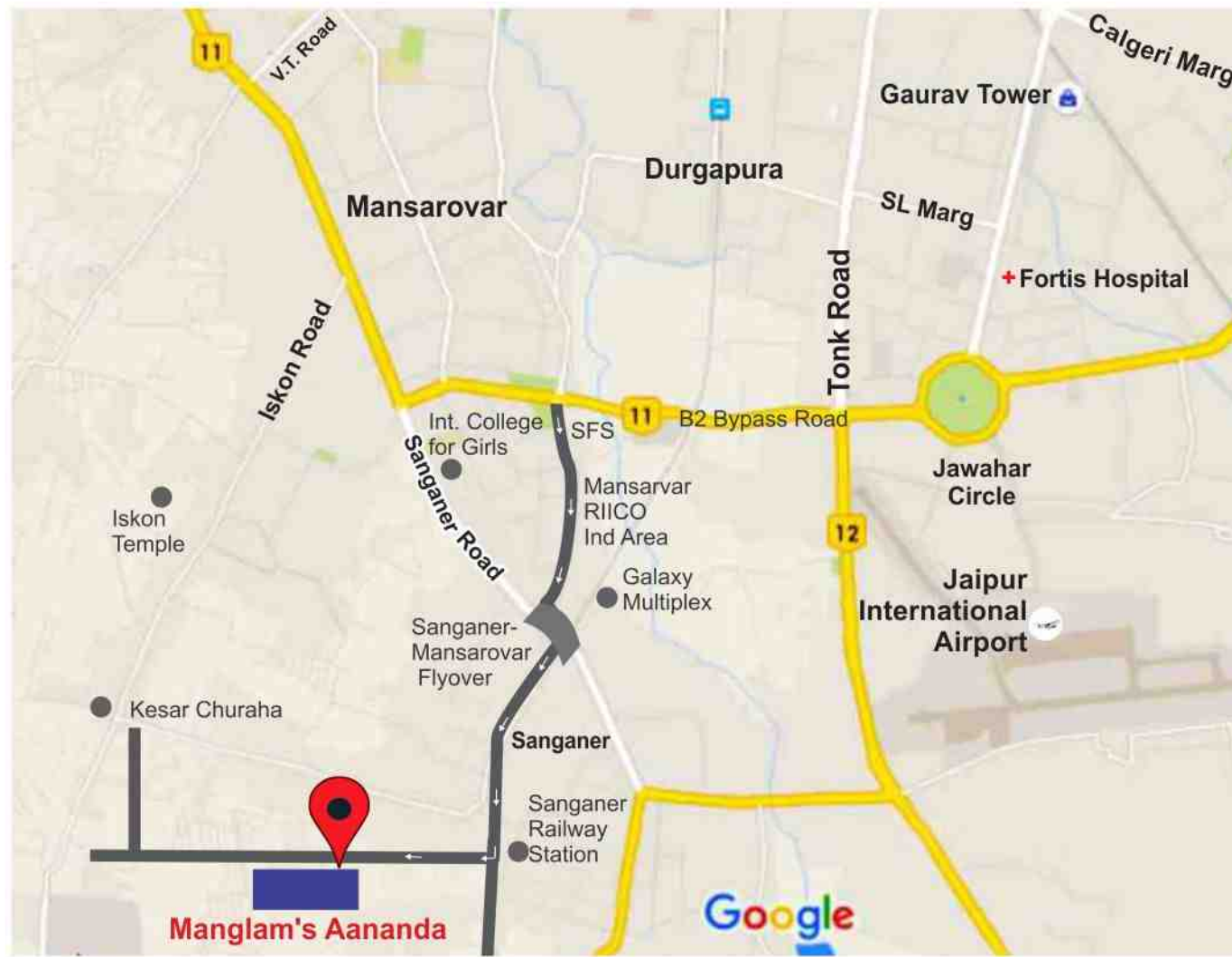
A home where the builder is available for lifetime to provide you the comfort, convenience & maintenance services what you desire to avail. There are very few builders who stay with you for long even after selling to maintain the project & provide you the maintenance services. Harmony Facility Management Pvt. Ltd. a maintenance Company of Manglam Builders is there to maintain the project to addition of more value & comfort to your life what you look for. At Manglam's Aananda we are there to maintain the Services & Facilities so that your home will be with full of Luxuries & Healthy Environment. We feel a great pleasure to provide the comfort, security & after sell services which is the basic needs of the customers.

We are one of the most reputed infrastructures who are committed to deliver the maintenance facilities in the project. Harmony is there by having teams of trained & technical staff to putting our efforts for better maintenance services. Lush Greenery & Plantation, Housekeeping, Garbage Collection & Proper 24 X 7 Security is to be taken care of by Harmony Facility Management Pvt. Ltd. Besides that well managed Water Harvesting, Water Bodies, Intercom & Telecommunication, Common area Power Backup are such essential facilities maintained by Harmony. Harmony also conducts social activities & events, games & outdoor activities to create a healthy environment. More than 12 Lacs sq.ft. in Over 13 Projects including Commercial & Residential projects are under Maintenance of Harmony.

**"Harmony Facility Management Pvt. Ltd."**

## SPECIFICATIONS

Locations	Flooring	External Doors & Windows	Fixture & Fittings	Chaukhats	Wall Finishes	Internal Doors	Ceilings
LIVING ROOM	Vitrified Tiles	-	Modular electrical switched with sockets and fan regulators.	Folded Steel Section	Acrylic Emulsion of pleasing shade of a reputed brand as per architects's suggestions	Flush doors/ molded Premium Handle	Acrylic Emulsion of pleasing shade of a reputed brand as per architects's suggestions
DINING ROOM / LOUNGE	Vitrified Tiles	Powder coated aluminum/UPVC sliding windows with provision for fly proof shutters/RCC	Modular electrical switched with sockets and fan regulators.	Folded Steel Section	Acrylic Emulsion of pleasing shade of a reputed brand as per architects's suggestions	Flush doors/ molded Premium Handle	Acrylic Emulsion of pleasing shade of a reputed brand as per architects's suggestions
KITCHEN	Anti skid ceramic tiles	Powder coated aluminum/UPVC sliding windows with provision for fly proof shutters/RCC	Granite counter with single bowl stainless steel sink & wall mounted cp mixture.	N/A	Tiles 600 mm above kitchen counter & rest OBD	-	Acrylic Emulsion of pleasing shade of a reputed brand as per architects's suggestions
MASTER BEDROOM	Vitrified Tiles	Powder coated aluminum/UPVC sliding windows with provision for fly proof shutters/RCC	Modular electrical switched with sockets and fan regulators.	Folded Steel Section	Acrylic Emulsion of pleasing shade of a reputed brand as per architects's suggestions	Flush doors/ molded Premium Handle	Acrylic Emulsion of pleasing shade of a reputed brand as per architects's suggestions
ALL OTHER BEDROOMS	Vitrified Tiles	Powder coated aluminum/UPVC sliding windows with provision for fly proof shutters/RCC	-	Folded Steel Section	Acrylic Emulsion of pleasing shade of a reputed brand as per architects's suggestions	Flush doors/ molded Premium Handle	Acrylic Emulsion of pleasing shade of a reputed brand as per architects's suggestions
TOILET	Anti skid ceramic tiles	Powder coated aluminum/UPVC sliding windows with provision for fly proof shutters/RCC	Hot & cold mixer, white colored was basin & English WC, CPVC inside the toilet and UPVC pipes for stacks.	Folded Steel Section	Ceramic tiles up to 2100 mm height. 300x450/ 300x600 & rest OBD	Flush doors/ molded Premium Handle	Bison board false ceiling
BALCONIES	Anti skid ceramic tiles	-	-	Anodised Aluminum of UPVC	-	-	Acrylic Emulsion of pleasing shade of a reputed brand as per architects's suggestions



#### Manglam's Aananda Drive Route Plan

- Drive from the Entertainment Paradise (EP) Point at Jawahar Circle Towards Across Tonk Road and Arrive at Mansarovar Agarwal Farm Crossing Through B2 Bye Pass.
- Take Left Turn from the Agarwal Farm Crossing, Passing By K.P. Automotives on The Right Hand Side and Galaxy Theater on The Left.
- Keep Driving Straight Ahead and Cross New Sangner Road and Further Ahead Cross Rampura-Sangner Road.
- You'll Find Sangner Railway Station on Your Left at A Short Distance, Wherefrom Take Right Turn. After Driving A Short Distance You'll Find Yourself at the Site of Aananda.

- Only 5.5 km from Jawahar Circle
- Only 7.4 km from Durgapura Railway Station
- Only 3.4 km from Shree Digamber Jain Mandir & Dadabari
- Only 4 km from Diggi Malpura Road
- Only 3 km from Iskon Temple

- Only 6 km from International Airport
- Only 3 km from Galaxy Multiplex
- Only 7.4 km from Fortis Hospital
- Only 8 km from World Trade Park
- Only 6.3 km from Pratapnagar





**MANGLAM BUILD-DEVELOPERS LTD.**

6th Floor, Apex Mall, Lal Kothi, Tonk Road,  
Jaipur-302015, Ph. :0141-4311100

Email : [info@manglamgroup.com](mailto:info@manglamgroup.com)

Website : [www.manglamgroup.com](http://www.manglamgroup.com)

**Site Office :**

Sanganer, Near Sanganer Railway Station, Jaipur

**RERA REGISTRATION NO : RAJ/P/2017/329**

Architect



**GIAN P. MATHUR & ASSOCIATES**

[www.gpmindia.com](http://www.gpmindia.com)

Follow us on



Disclaimer : This Brochure is purely conceptual and not a legal offering. Further the Promoters/Architect reserve the right to add/delete/ modify any details/specifications/elevation mentioned here in.

